



NCC Introduction

History and Situation Assessment

- **History**

The construction started in 11/15/2004

Completely built within 22 months

- **Role**

To become the No. Vietnam 1 location in in Political – Economic –
Cultural – Social event planning

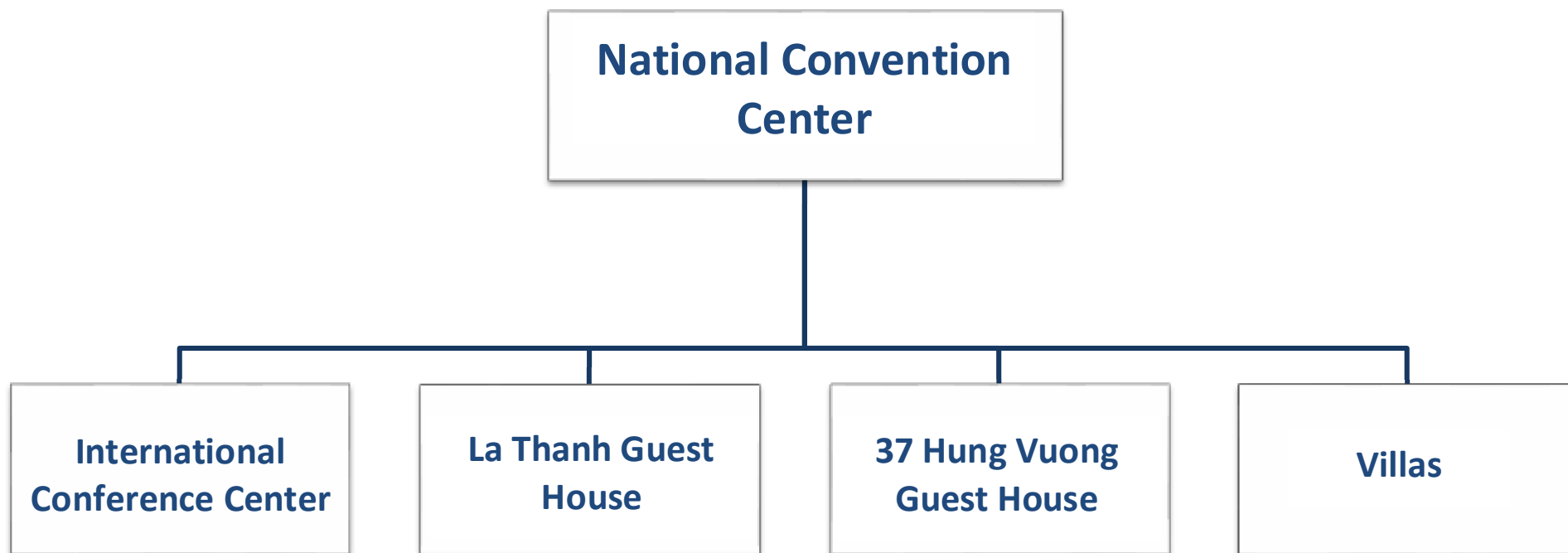
- **Mission**

We promise to provide the best standardized event planning service with respect, dedication, and responsibility to our partners.



NCC Introduction

Subordinate Units

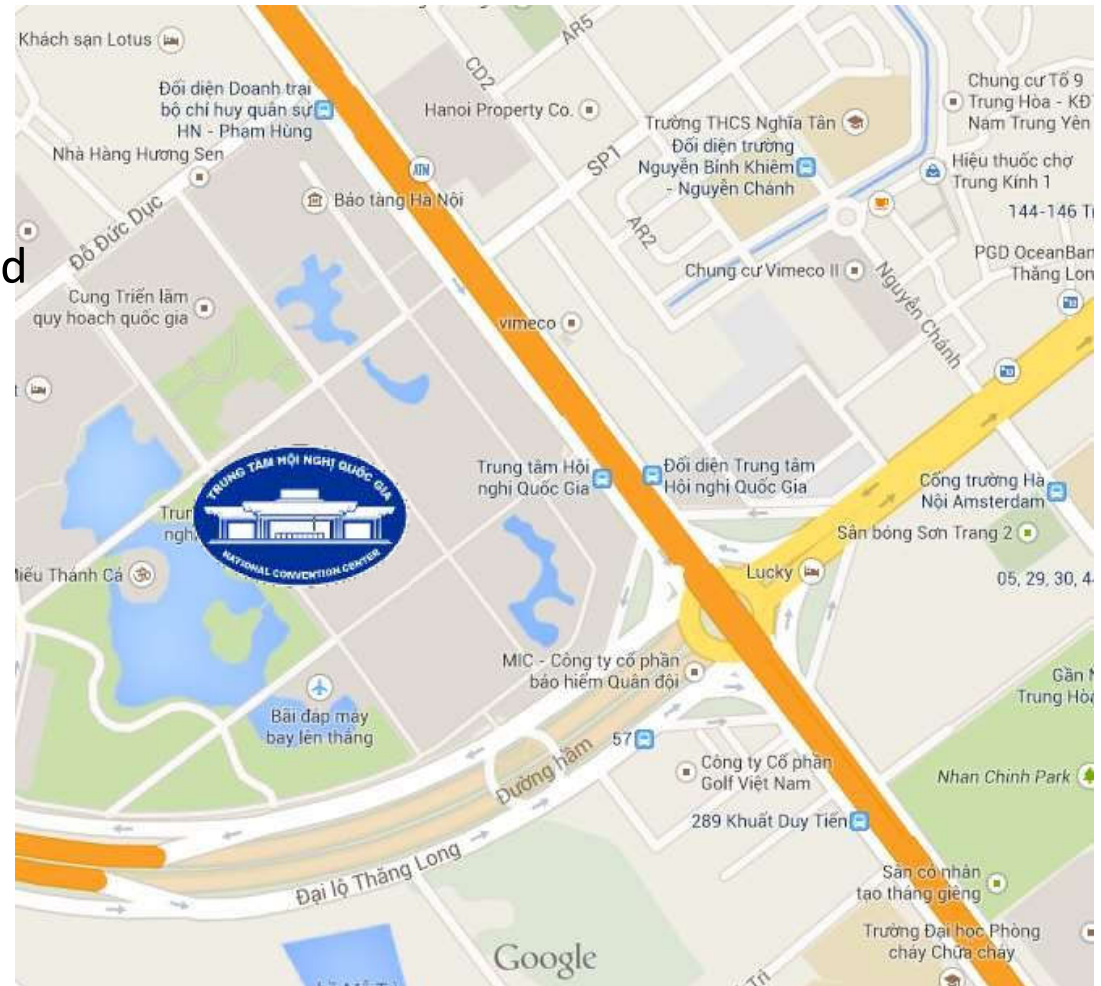




NCC Introduction

Location

- Located at the intersection of Thang Long Ave and Pham Hung St
- Located at the main East – West road
- 10 km from Hanoi center and 40 km from Noi Bai airport
- Surrounded by buildings and offices of governmental departments, organizations and big corporations





NCC Introduction

Design:



Total Area: 64 ha

Main building: 70+ room

Resorts and villas

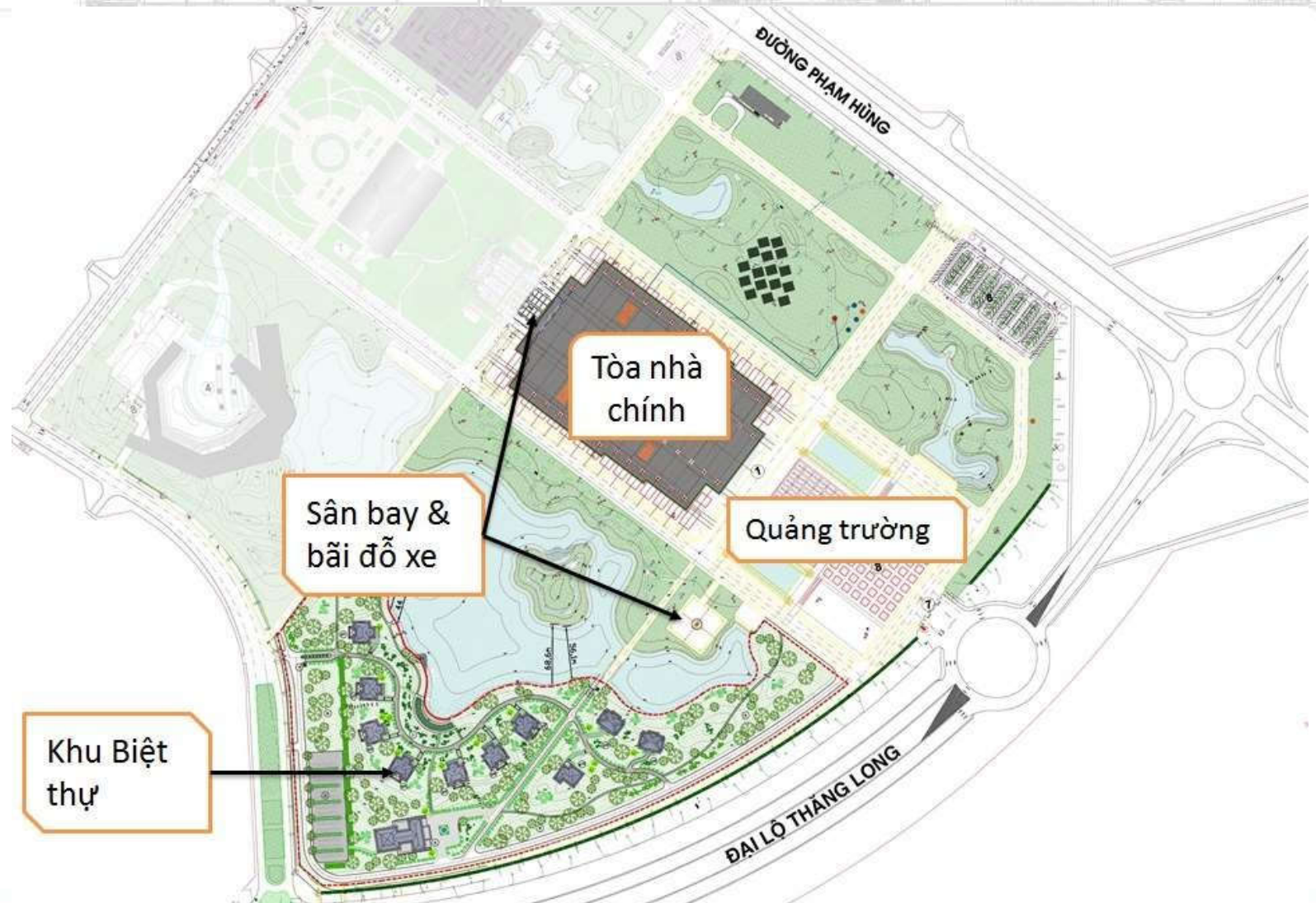
Green campus

Garage and heliport



NCC Introduction

Planning scheme of the main building and subordinate units





NCC Introduction

Green campus

- Rare species of trees, green grass area, man-made hill, Van Tue island, and 3 interconnected climate control lakes with the total area of 9.4ha
- 30 stone statues are displayed around the area – the artworks are created by the famous Nguyen Long Buu sculptor in 15 years





NCC Introduction

Garage and Heliport



- Capacity: 1100+ cars/motorbikes
- Safe and secured to guests and delegates
- Convenience guaranteed



NCC Introduction

The Square



- 10.000m²

06/2014: The first-time-ever in Hanoi music stage with designated water system

Hosted art shows, fairs, exhibitions, etc.